

UMS 1000 Universal Monitoring System

ECR [v] [Icons] 1/30 [Silence] [Ack Alarm] 17:58:17 2008-8-13 LT

Event History [v]

ALL [v] Active Alarm:171 UnAck.Alarm:141 Disable Alarm:184

ID	Tag Name	Group	Value	Unit	Date	Time	Message
5049	Tank washing main pipe temp.	Equipment for engine r	0.00	MPa	2008-11-13	17:44:00	Normal
5048	Tank washing main pipe press.	Equipment for engine r	0.00	MPa	2008-11-13	17:44:00	Normal
5047	Tank washing pump suction press.	Equipment for engine r	0.00	MPa	2008-11-13	17:44:00	Normal
5046	Tank washing pump discharge press.	Equipment for engine r	0.00	MPa	2008-11-13	17:44:00	Normal
5045	Ballast pump suction press.	Equipment for engine r	0.00	MPa	2008-11-13	17:44:00	Normal
5044	Ballast pump discharge press.	Equipment for engine r	0.00	MPa	2008-11-13	17:44:00	Normal
1037	Gear box lub. Oil low press. Alarm	Gear box sys.	0.00	MPa	2008-11-13	17:44:00	Normal
1020	control air press. Low alarm	M/E control sys.	0.00	MPa	2008-11-13	17:44:00	Normal
1019	starting air press. Low alarm	M/E control sys.	0.0	MPa	2008-11-13	17:44:00	Normal
1018	F.O.press. Low alarm	M/E exhaust gas sys.	0.00	MPa	2008-11-13	17:44:00	Normal
2045	starting air inlet press. Low alarm of aux.gen(SB)	Aux.gen (staboard)	0.00	MPa	2008-11-13	17:44:00	Normal
2043	LO press. Low alarm of aux.gen(SB)	Aux.gen (staboard)	0.00	MPa	2008-11-13	17:44:00	Normal
2030	HT FW outlet temp. high alarm of aux.gen(M)	Aux.gen (middle)	0.0	°C	2008-11-13	17:44:00	Normal
2029	starting air inlet press. Low alarm of aux.gen(M)	Aux.gen (middle)	0.00	MPa	2008-11-13	17:44:00	Normal
2027	LO press. Low alarm of aux.gen(M)	Aux.gen (middle)	0.00	MPa	2008-11-13	17:44:00	Normal

- 2014
- 2013
- 2011
- 1041
- 1040
- 1039
- 1031
- 1030



Jumho Electric

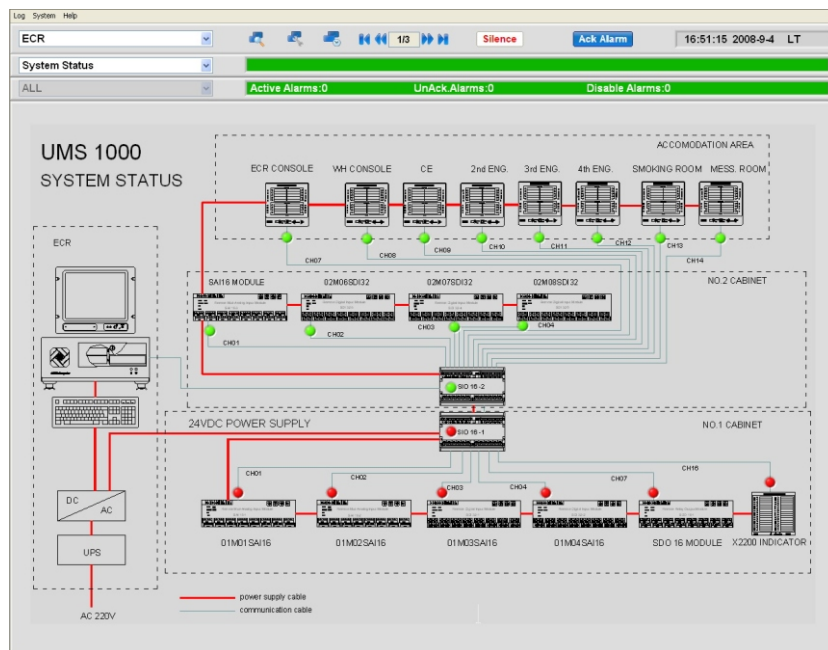


UMS 1000 Universal Monitoring System

UMS 1000 Components & Features

Main Benefits

- Cost Efficient
- Modular and Flexible
- User-Friendly
- Safe and Reliable



General Information

Universal monitoring system has been widely applied in vessels to watch over the sailing situations, which could greatly improve the safety and reliability of the ship sailing. UMS1000 is designed to meet the high demands of marine applications. And this product can applied into all type of vessels. Monitoring, control and alarm is the main feature of this product.

System Architecture

The UMS 1000 is divided into four parts:

- Software: Human Machine Interface
- Reporting
- Duty Alarm System
- Cabinet and I/O hardware

Software: human machine interface

All real-time monitoring data is comfortable present via color graphic mimics. The HMI(human machine interface) has several main functions: display, alarm, event recording, data logging, user Ack, bar graph, real-time chart, system status etc. Software provides friendly and flexible interface for operator.

Software: HMI

Reporting

Main functions:
 Group Display
 Alarm Lists
 Graphical Real-time Trend
 Bar Graphs
 Group Overview
 System Status
 etc.

Alarm & Event Printers for:
 Logging of All Alarms
 Logging of All Events
 User-Defined Data Logs
 etc.

The Modular Cost Efficient Solution

Reporting

An alarm and event printer is connected with computer for data logging. Software is based on high performance database design and printer can easily choose different report to print.

Duty alarm system

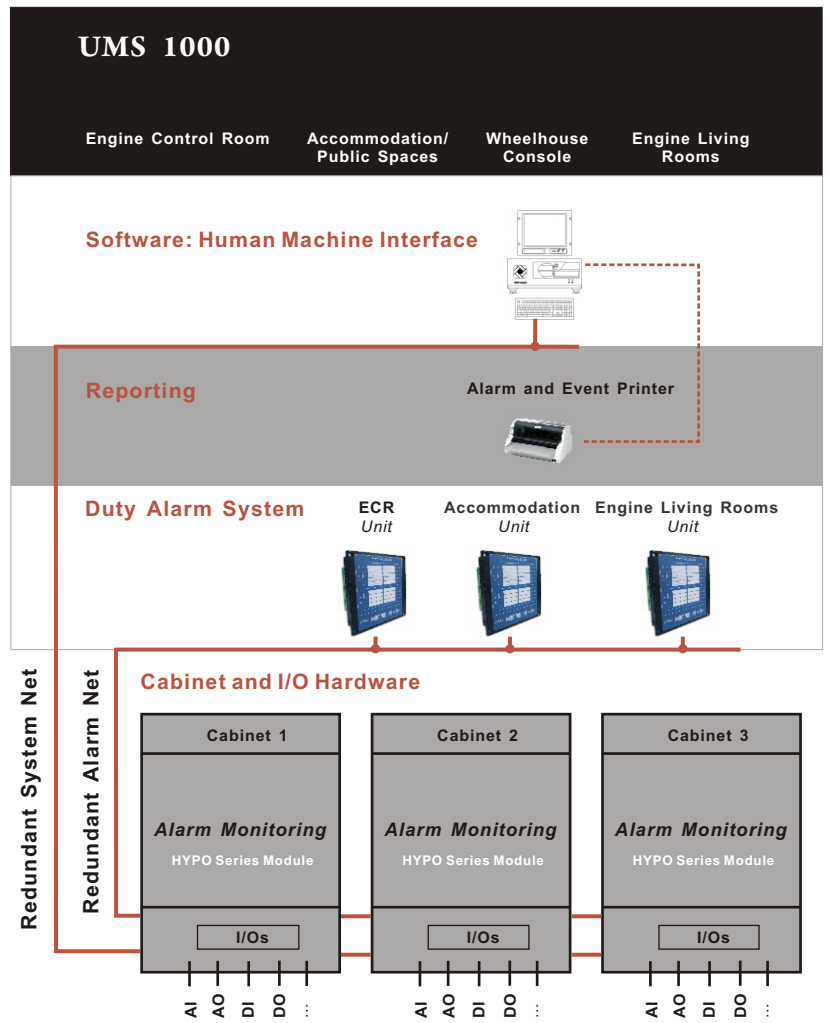
Remote watch units are distributed around the ship such as accommodation area and public spaces where alarms can be viewed and acknowledged. Various units can be distributed around the ship according to your specific requirements.

Monitoring cabinet

The cabinet consists of I/O modules is used for collecting and processing of data from the monitoring process. The intelligent cabinet is fully independent data processor which has redundant communication function for data exchange. Jumho Electric designed HYPO series data acquisition module providing high robust, redundancy features.

Modular and Cost Efficient

The UMS 1000 is a module based system. The hardware is formed by HYPO series modules minimizing the spare parts and reducing cost for your ship.



Duty Alarm System

- Duty Selection**
- Alarm Acknowledgement
- Alarm Announcement
- Intelligent Instrument
- Redundant Communication
- etc.

Cabinet and I/O Hardware

- Independent Units**
- HYPO series Analog I/O, DIO Modules included
- Distributed I/O and Anti-dust Design
- Redundant Communication
- etc.

Competence in Marine Automation

Partnership



Jumho Electric provides innovation, high-quality products and system solutions for marine and industrial applications worldwide.

Jumho Electric is always keen on new innovations.

Jumho Electric Marine's product lines consist of

- Alarm and Monitoring System
- Valve Remote Control System
- Electro-pneumatic Level Gauging System
- Vapour Alarm System
- Remote Data Acquisition Module
- Intelligent Instrument

all with strong positions on the market.

Company Culture

- Honesty
- Innovation
- Never give up!

Company goal

- To be the global leader in the industry

Our opening platform combines different products together and also provides customized solutions.

We strive to give our customers highest possible benefits.



ISO 9001:2000



GL



CCS



高新技术企业证书

Jumho Electric



Headquarter

JUMHO ELECTRIC(GUANGZHOU)CO.,LTD

No.15 Daguan Middle Road, Huangcun,
Tianhe, Guangzhou
510663, China

Phone: +86 (20) 6234 6488

Fax: +86 (20) 6234 6488

E-mail: jumho@jumho.cn
www.jumho.cn

JUMHO ELECTRICAL(HK)CO.,LIMITED

Rm 601-2 Chuk On Building,23 Mercer
Street.Sheung Wan.HONGKONG.49-51.
7B2-0308

Phone: (852) 2425 7777

Fax: (852) 2854 2875

E-mail: jumho@jumho.cn
www.jumho.cn